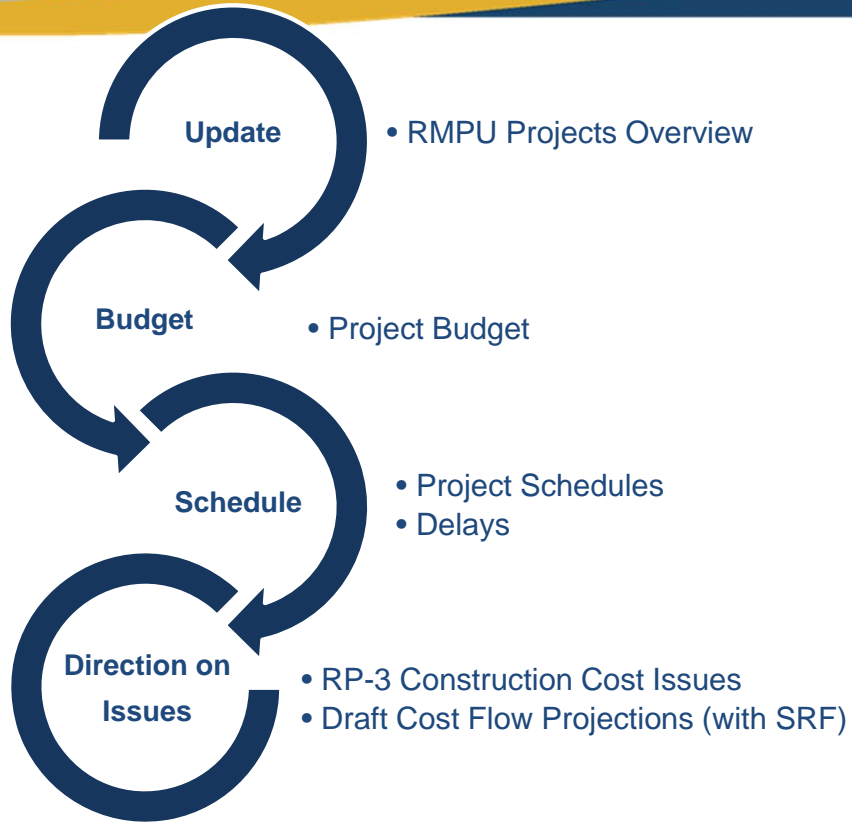


# Recharge Investigation and Project Committee (RIPCom) Meeting April 19, 2108

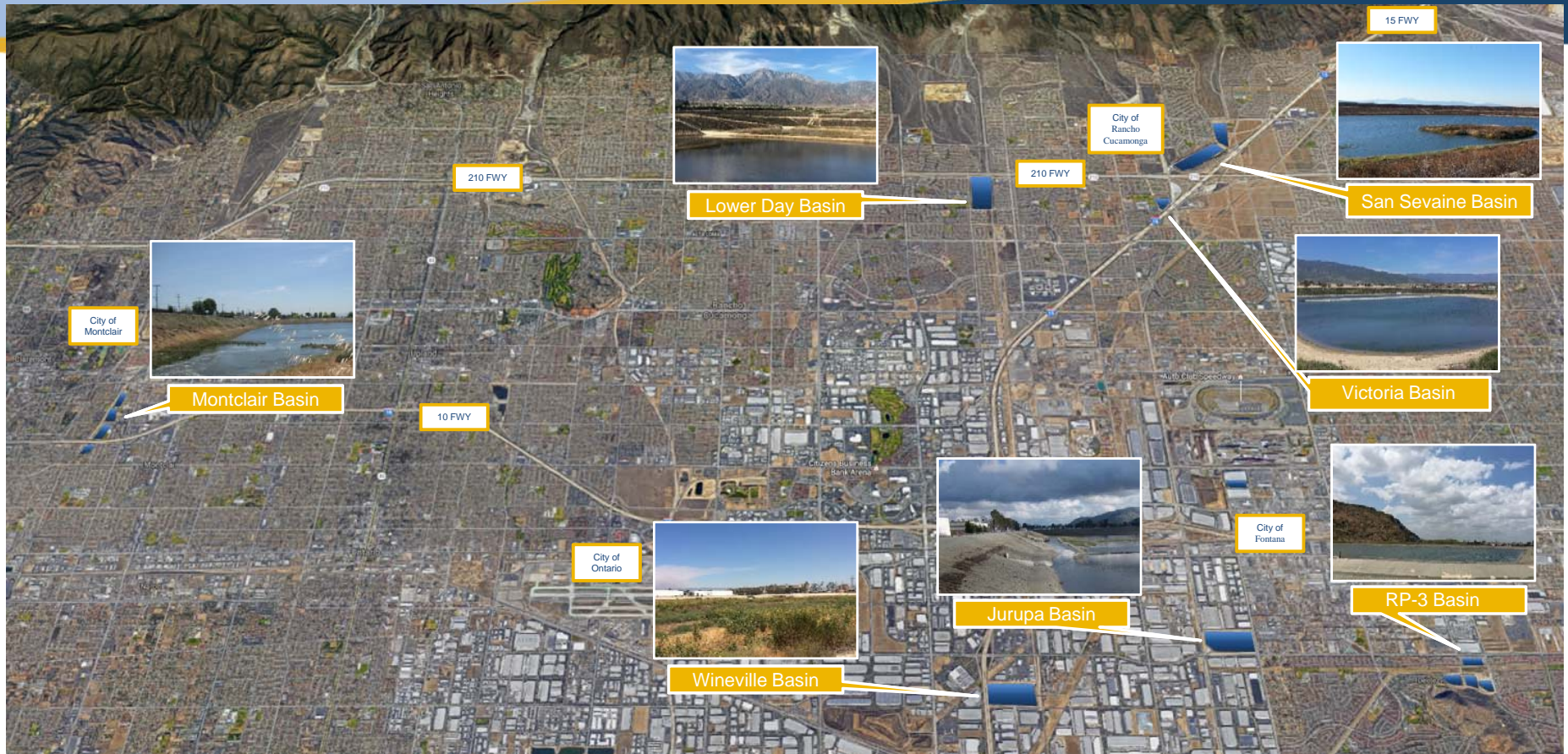


# Presentation Agenda



RP-3 (Drone Photo)

# Recharge Master Plan Update (RMPU) – Project Location



# San Sevaine Basin Improvements

- **Project Goal:** 642 AFY of SW and 4,100 AFY RW
- **Current Phase:** Construction
- **Contractor(s):** Gwinco/Yellow Jacket Drilling (YJ)
- **Contract Amount:** \$3,873,029 (Gwinco)/\$607,470 (YJ)
- **Total Project Budget:** \$6.4 M
- **Project Completion:** Sept. 2018
- **Percentage Complete:** 45%
- **Current Activities:**
  - Piping testing, lay electrical, finalizing controls/motor center
  - Well vault, pump and level transducer install



30-Inch PVC Install



Monitoring Well Construction

# Lower Day Basin Improvements

- **Project Goal:** 993 AFY of SW
- **Current Phase:** Design (85% Phase)
- **Contractor(s):** None
- **Consultant:** Carollo
- **Design Budget:** \$676 K
- **Construction Budget:** \$ 3.32 M
- **Total Project Budget:** \$4.1 M
- **Design Completion:** Jul. 2018
- **Percentage Complete:** 75% (of Design)
- **Current Activities:**
  - Finalized 85% Design Plans
  - Awaiting review comments from Flood Control District



Lower Day (lower basin)



Lower Day

# Victoria Basin Improvements

- **Project Goal:** 75 AFY of SW and 120 AFY of RW
- **Current Phase:** Design (85% Phase)
- **Contractor(s):** None
- **Consultant:** Carollo
- **Design Budget:** \$25 K
- **Construction Budget:** \$143 K
- **Total Project Budget:** \$168 K
- **Design Completion:** Jun. 2018
- **Percentage Complete:** 75% (of Design)
- **Current Activities:**
  - Finalized additional geotechnical of side slope
  - Awaiting review comments from Flood Control District



Victoria Basin



Mid-Level Out

# Montclair Basin Improvements

- **Project Goal:** 96 AFY of SW
- **Current Phase:** Design (85% Phase)
- **Contractor(s):** None
- **Consultant:** Carollo
- **Design Budget:** \$221 K
- **Construction Budget:** \$1.56 M
- **Total Project Budget:** \$1.78 M
- **Design Completion:** Jun. 2018
- **Percentage Complete:** 75% (of Design)
- **Current Activities:**
  - Finalized 85% design plans
  - Awaiting review comments from US Army Corps of Engineers



Channel (Montclair 2)



Channel (Montclair 3)

# Wineville/Jurupa Basins Improvements

(A part of the RMPU 23a Project)

- **Project Goal:** 2,921 AFY of SW 2,905 AFY of RW
- **Current Phase:** Design (85% Phase)
- **Contractor(s):** None
- **Consultant:** Carollo
- **Design Budget:** \$1.6 M
- **Construction Budget:** \$13.3 M
- **Total Project Budget:** \$14.9 M
- **Design Completion:** Jul. 2018
- **Percentage Complete:** 75% (of Design)
- **Current Activities:**
  - Finalized 85% design plans
  - Awaiting review comments from Flood Control District



Wineville Basin



Rail Road Spur - Pipeline



San Sevaine Channel near Jurupa Basin



# RP-3 Basin Improvements

(A part of the RMPU 23a Project)

- **Project Goal:** 2,921 AFY of SW 2,905 AFY of RW
- **Current Phase:** Bid and Award
- **Contractor(s):** None
- **Consultant:** Carollo
- **Design Budget:** \$369 K
- **Construction Budget:** \$1.12 M
- **Total Project Budget:** \$1.4 M
- **Project Completion:** Dec. 2019
- **Percentage Complete:** 50% (of Bid and Award)
- **Current Activities:**
  - Receive Bids
  - Finalized the selection of lowest apparent bidder



Abandon Treatment Tank



Abandon Pump Building

# RP-3 Basin Improvements (Direction on Finalizing Bids)

- **Bid Results:**

- Received 2 Bids on the 3 Separated Construction tasks:

Bid Items	Bidders	
	James McMinn Inc.	Environmental Construction Inc.
Demolition/Removal (Item 1)	\$99,900	\$195,970
Basin Improvements (Item 2)	\$709,950	\$677,315
Basin Excavation and Hauling (Item 3)	\$577,905	\$915,027

# RP-3 Basin Improvements (Direction on Finalizing Bids)

- Award Recommendation:**

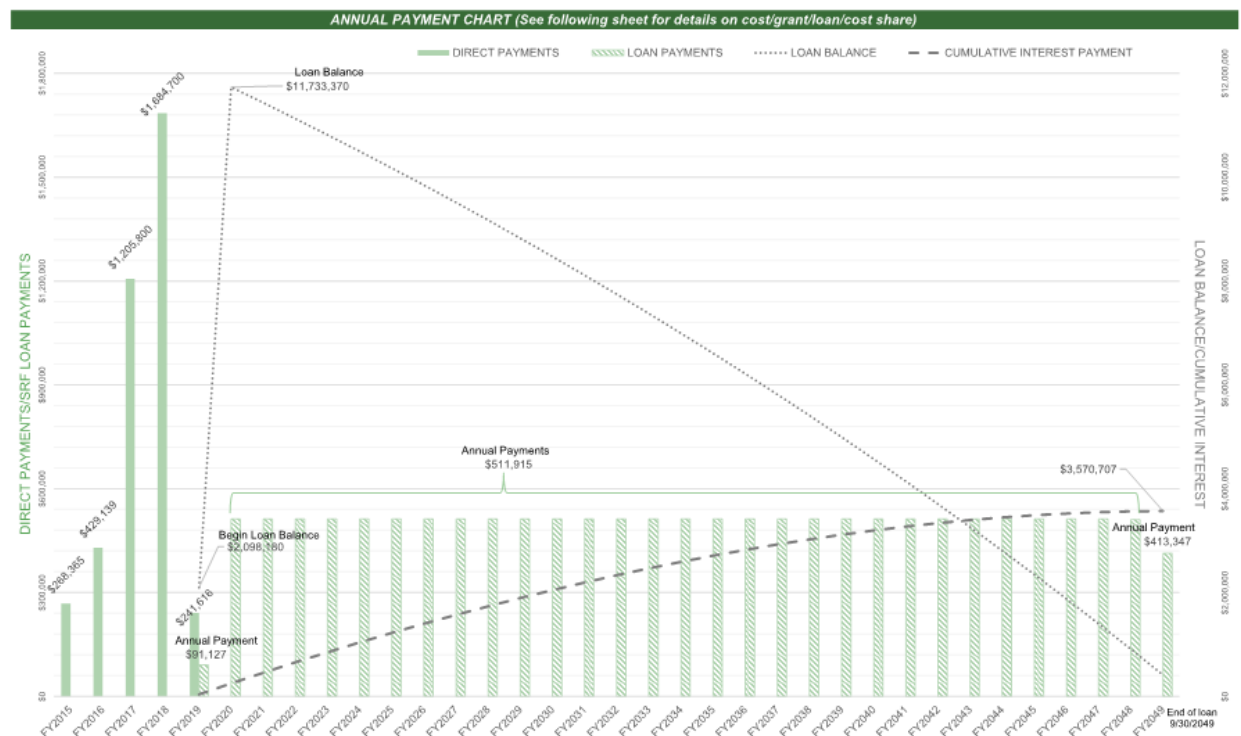
- Proceed to award all bid items to Lowest Bidders:

Bid Items	Bidders		Engineer's Estimate
	James McMinn Inc.	Environmental Construction Inc.	
Demolition/Removal (Item 1)	<b>\$99,900</b>	\$195,970	\$180,000
Basin Improvements (Item 2)	<b>\$709,950</b>	\$677,315*	\$680,000
Basin Excavation and Hauling (Item 3)	<b>\$577,905</b>	\$915,027	\$200 K / \$1.0 M
Total of Lowest Bids	<b>\$1,387,755</b>		

(\*Update: Environmental is pulling bid due to a clerical error. No longer lowest bidder on Item 2)

# RMPU Draft Projected Payments (Review and Comment)

- Prepared Charts: (see hand outs)



# Questions